

# THINK PRESSURE CARE

## DECEMBER 2015 NEWSLETTER

### Invacare's latest clinical articles speak for themselves

#### A Review of the Softform® Premier Active 2 Hybrid Mattress



“.....The evaluation of the use of Softform Premier Active 2 mattresses over a 12-month period has highlighted that it has been used effectively for the management of many patients with **deep pressure ulcers**.....”

“.....the use of the Softform Premier Active 2 mattress within an NHS community trust over a 12-month period has identified the effectiveness of these mattresses for patients with **grade III and IV pressure ulcers**.....”

Wounds UK | Vol 11 | No 4 | 2015

#### Strikethrough Resistant Technology (SRT) Mattress Covers show proven performance after 3 years in use

“...Compared to the **national average failure rate of 27%**, the audit results revealed an annual replacement rate of approximately **1.9% for Crib 5 and 0.7% for Crib 7** covers.....”

“...The results show that following over 3 years of continued use in a high turnover acute hospital environment .....SRT fabrics **were as good as when they left the Dartex factory**.....”

Wounds UK | Vol 11 | No 3 | 2015



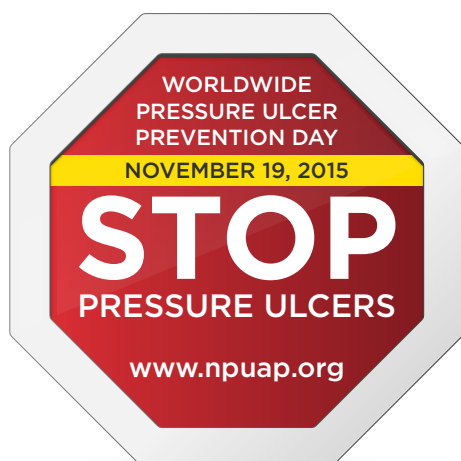
Read the full articles here, or speak to your local DBM for more details:  
<http://www.thinkpressurecare.co.uk/clinical-papers/clinical-papers.aspx>



Trusted Solutions, Passionate People



# Supporting Pressure Ulcer Prevention Day



Don't forget all our helpful educational resources are online at [www.thinkpressurecare.co.uk](http://www.thinkpressurecare.co.uk)

Barnet and Chase Farm Hospitals



Matt at 'Stop the Pressure' Conference, Brighton General Hospital



Annie at Sheffield Teaching Hospitals NHS Foundation Trust event organised by Brenda King Tissue Viability



Invacare supporting Golden Jubilee hospital in Glasgow



Invacare's Vinny and Etaoin, TVN Beaumont Hospital Dublin



Invacare's marketing team

Jamie supporting Birmingham Community Healthcare Trust



Rosie Callaghan at Evesham hospital



Annie and Monique, TVN, Worcester Health and Care Trust at the Saffron Centre, Birmingham





# Softform® Premier Active 2 Hybrid mattress

## Comfort first...

### A high specification foam interface

A complete patient centric solution, the Softform Premier Active 2 mattress (SPA2), combines the redistributing qualities of specially cut foam castellations at the patient interface, with air cells beneath that can be inflated as required to provide active therapy. This construction ensures the patient will be supported by enveloping supportive high specification foam\*, whether the pump, powering the air cells, is switched on or off. The patient's safety is ensured as they will always be lying on a high specification foam surface.



The comfortable skin interface provides **effective therapy** for the treatment of pressure ulcers and **ensures comfort is maintained at all times**.

\*NICE Clinical Guideline 179, September 2014










.....

Ask your local Business Development Manager to give you a demonstration of the Softform Premier Active 2 mattress - and feel how comfortable it is for yourself.

.....

## Meet the team

### Business Development Team

	<b>David Beavis</b> National Sales Manager Mob: 07977 980 723 dbeavis@invacare.com		<b>Richard Mears</b> Scotland Mob: 07929 027 547 rmears@invacare.com		<b>Martin Broad</b> North East Mob: 07977 090632 mbroad@invacare.com
	<b>Jamie Lissaman</b> E Anglia, E Midlands & N London Mob: 07973 836 382 jlissaman@invacare.com		<b>Beulah Pope</b> Wales & South West Mob: 07977 980 709 bpope@invacare.com		<b>Matt Ashdown</b> South East Mob: 07970 842324 mashdown@invacare.com
	<b>Kurt Johnson</b> North West Mob: 07977 001 459 kjohnson@invacare.com		<b>Annie Allsopp</b> UK PAC Clinical Specialist Mob: 07973 437085 aallsopp@invacare.com		<b>Esther Acton</b> PAC Product Specialist Mob: 07977 980720 eacton@invacare.com

# EVENTS AND EXHIBITIONS



## David Beavis and Annie Allsopp at WMAI, Wound Management Association of Ireland Oct 2015.

Annie presented with Helen Strapp, Tissue Viability Nurse Specialist, Tallaght Hospital. Tallaght conducted a successful evaluation of the Softform Premier Active 2 where they concluded:

- The patients found the surface to be very comfortable
- Patients' skin integrity overall was excellent
- The improvement in manual handling resulted in reducing the amount of time required to upgrade a mattress



## Wounds UK

The event annual dinner

**Wounds UK Harrogate 2015** It was a very busy time at Wounds UK in Harrogate last month - great feedback on the Active 2 Hybrid mattress system and some fun times with Vinny from the Invacare Irish team, seen here with TVNs Helen Strapp, Lisa Joyce, Niamh Bolas, Pedro Soriano and Professor Zena Moore.



## Invacare Sponsors Nursing Times Awards Winners

Invacare is proud to have sponsored Michaela Arrowsmith and her team from Royal United Hospitals Bath NHS Foundation Trust. Congratulations on winning the 2015 Nursing Times award in the "Patient Safety Improvement" category for their great efforts in reducing the incident of Pressure Ulcers in their hospital



To request PAC brochures and support materials please see our website [www.thinkpressurecare.co.uk/contactform.aspx](http://www.thinkpressurecare.co.uk/contactform.aspx) or contact our Marketing Assistant, Joan James on **01656 776283** or email Joan on [jjames@invacare.com](mailto:jjames@invacare.com)



*What's this? Simply scan this code with the QR reader on your Smartphone to visit [www.thinkpressurecare.co.uk](http://www.thinkpressurecare.co.uk)*

Invacare Ltd, Pencoed Technology Park, Pencoed, Bridgend. CF35 5AQ

T: 01656 776 222 // F: 01656 776 220

*For more information on the Pressure Area Care range from Invacare, please visit [www.thinkpressurecare.co.uk](http://www.thinkpressurecare.co.uk)*

## Are you following on Social Media?



**Follow us on Twitter:**  
[@Tpressurecare](https://twitter.com/Tpressurecare)



**Follow us on LinkedIn:**  
Think Pressure Care Think Invacare